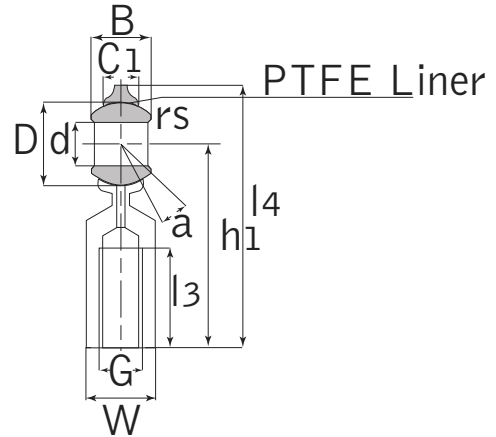
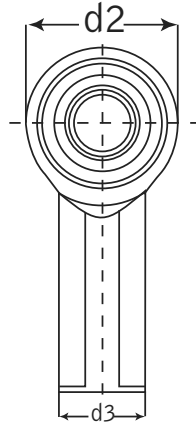




Rod End

Steel-on-Steel



SIZJ

Bearing Number	Dimensions (inch / mm)													Load Ratings kN		Weight ~lbs	Weight ~kg
	d	B	D	C1 MAX	d2	G	h1	l3 Min	l4	W	d3	rs Min	α° ≈	Dynamic	Static		
SIZJ4	0.19 4.83	0.312 7.92	0.437 11.1	0.234 5.94	0.625 15.88	10-32	1.062 26.97	0.5 12.7	1.375 34.93	0.312 7.92	0.406 10.31	0.012 0.3	10	3.6	6.8	0.033	0.018
SIZJ6	0.25 6.35	0.375 9.53	0.5 12.7	0.25 6.35	0.75 19.05	1/4-28	1.312 33.32	0.625 15.88	1.687 42.85	0.375 9.53	0.469 11.91	0.012 0.3	13.5	5.4	9.6	0.055	0.023
SIZJ7	0.3125 7.94	0.437 11.1	0.625 15.88	0.312 7.92	0.875 22.23	5/16-24	1.375 34.93	0.625 15.88	1.812 46.02	0.437 11.1	0.5 12.7	0.012 0.3	11	8.5	12	0.079	0.036
SIZJ9	0.375 9.53	0.5 12.7	0.719 18.26	0.359 9.12	1 25.4	3/8-24	1.625 41.28	0.75 19.05	2.125 53.98	0.562 14.27	17.45 0.687	0.024 0.6	11	11	16	0.134	0.059
SIZJ11	0.4375 11.11	0.562 14.27	0.812 20.62	0.406 10.31	1.125 28.58	7/16-20	1.812 46.02	0.875 22.23	2.375 60.33	0.625 15.88	0.75 19.05	0.024 0.6	10.5	14	21	0.178	0.082
SIZJ12	0.5 12.7	0.625 15.88	0.937 23.81	0.453 11.5	1.312 33.32	1/2-20	2.125 53.98	1 25.4	2.781 70.64	0.75 19.05	0.875 22.23	0.024 0.6	10	18	28	0.293	0.132
SIZJ15	0.625 15.88	0.75 19.05	1.125 28.58	0.484 12.29	1.5 38.1	5/8-18	2.5 63.5	1.25 31.75	3.25 82.55	0.875 22.23	1 25.4	0.024 0.6	13	23	29	0.418	0.195
SIZJ19	0.75 19.05	0.875 22.23	1.312 33.32	0.593 15.06	1.75 44.45	3/4-16	2.875 73.03	1.375 34.93	3.75 95.25	1 25.4	1.125 28.58	0.024 0.6	12	34	44	0.627	0.295

For left-hand thread suffix "L" is added to bearings number e.g. SILZJ12.
Also available with grease fitting, add letter "G" at the end e. g. SIZJ19G.