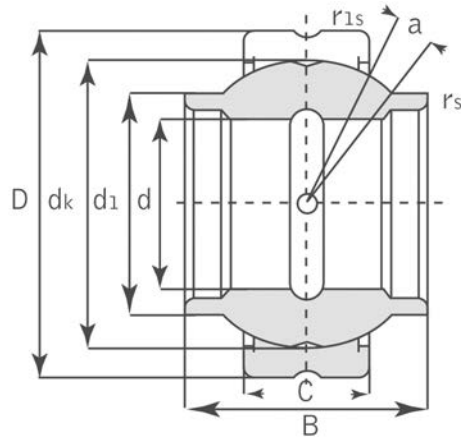




Spherical Plain



GEWZ ES / GEWZ ES-2RS

| Bearing Number | | Dimensions (inch / mm) | | | | | | | | | Load Ratings kN | | Weight ~kg |
|----------------|---------------|------------------------|--------------------------|-------------------------|-------------------------|-------------------------|-----------------------|----------------------|---------------------|-----|-----------------|--------|------------|
| | | d | D | B | C | max d1 | dk | min rs | min r1s | a ~ | Dynamic | Static | |
| GEWZ 12 ES | | 0.5 12.7 | 0.875 22.225 | 0.75 19.05 | 0.375 9.525 | 0.625 15.875 | 0.719 18 | 0.006 0.15 | 0.024 0.6 | 5 | 13 | 41 | 0.024 |
| GEWZ15ES | | 0.625 15.875 | 1.0625 26.988 | 0.937 23.8 | 0.469 11.913 | 0.78 19.812 | 0.899 23 | 0.006 0.15 | 0.024 0.6 | 5 | 22 | 65 | 0.038 |
| GEWZ19ES | GEWZ19ES-2RS | 0.75 19.05 | 1.25 31.75 | 1.125 28.575 | 0.562 14.275 | 0.92 23.368 | 1.08 27.5 | 0.012 0.3 | 0.024 0.6 | 5 | 31 | 95 | 0.064 |
| GEWZ22ES | GEWZ22ES-2RS | 0.875 22.225 | 1.4375 36.513 | 1.312 33.325 | 0.656 16.662 | 1.07 27.178 | 1.258 32 | 0.012 0.3 | 0.024 0.6 | 5 | 42 | 127 | 0.098 |
| GEWZ25ES | GEWZ25ES-2RS | 1 25.4 | 1.625 41.275 | 1.5 38.1 | 0.75 19.05 | 1.22 30.988 | 1.437 36.5 | 0.012 0.3 | 0.024 0.6 | 5 | 56 | 166 | 0.142 |
| GEWZ31ES | GEWZ31ES-2RS | 1.25 31.75 | 2 50.8 | 1.875 47.625 | 0.937 23.8 | 1.525 38.735 | 1.795 45.5 | 0.024 0.6 | 0.024 0.6 | 5 | 86 | 260 | 0.271 |
| GEWZ34ES | GEWZ34ES-2RS | 1.375 34.925 | 2.1875 55.563 | 2.062 52.375 | 1.031 26.187 | 1.67 42.418 | 1.937 49 | 0.024 0.6 | 0.04 1 | 5 | 102 | 310 | 0.373 |
| GEWZ38ES | GEWZ38ES-2RS | 1.5 38.1 | 2.4375 61.913 | 2.25 57.15 | 1.125 28.575 | 1.85 46.99 | 2.155 54.7 | 0.024 0.6 | 0.04 1 | 5 | 125 | 375 | 0.494 |
| GEWZ44ES | GEWZ44ES-2RS | 1.75 44.45 | 2.8125 71.438 | 2.625 66.675 | 1.312 33.325 | 2.165 54.991 | 2.515 63.9 | 0.024 0.6 | 0.04 1 | 5 | 170 | 510 | 0.762 |
| GEWZ50ES | GEWZ50ES-2RS | 2 50.8 | 3.1875 80.963 | 3 76.2 | 1.5 38.1 | 2.46 62.484 | 2.875 73 | 0.024 0.6 | 0.04 1 | 5 | 224 | 670 | 1.11 |
| GEWZ57ES | GEWZ57ES-2RS | 2.25 57.15 | 3.5625 90.488 | 3.375 85.725 | 1.687 42.85 | 2.76 70.104 | 3.235 82 | 0.024 0.6 | 0.04 1 | 5 | 280 | 850 | 1.57 |
| GEWZ63ES | GEWZ63ES-2RS | 2.5 63.5 | 3.9375 100.013 | 3.75 95.25 | 1.875 47.625 | 3.06 77.724 | 3.59 92 | 0.04 1 | 0.04 1 | 5 | 355 | 1060 | 2.15 |
| GEWZ69ES | GEWZ69ES-2RS | 2.75 69.85 | 4.375 111.125 | 4.125 104.775 | 2.062 52.375 | 3.38 85.852 | 3.95 100 | 0.04 1 | 0.04 1 | 5 | 415 | 1250 | 2.9 |
| GEWZ76ES | GEWZ76ES-2RS | 3 76.2 | 4.75 120.65 | 4.5 114.3 | 2.25 57.15 | 3.675 93.345 | 4.312 109.5 | 0.04 1 | 0.04 1 | 5 | 500 | 1500 | 3.59 |
| GEWZ82ES | GEWZ82ES-2RS | 3.25 82.55 | 5.125 130.175 | 4.875 123.825 | 2.437 61.9 | 3.985 101.219 | 4.675 119 | 0.04 1 | 0.04 1 | 5 | 585 | 1760 | 4.69 |
| GEWZ88ES | GEWZ88ES-2RS | 3.5 88.9 | 5.5 139.7 | 5.25 133.35 | 2.625 66.675 | 4.3 109.22 | 5.04 128 | 0.04 1 | 0.04 1 | 5 | 680 | 2040 | 5.86 |
| GEWZ95ES | GEWZ95ES-2RS | 3.75 95.25 | 5.875 149.225 | 5.625 142.875 | 2.812 71.425 | 4.59 116.586 | 5.39 137 | 0.04 1 | 0.04 1 | 5 | 780 | 2360 | 7.11 |
| GEWZ101ES | GEWZ101ES-2RS | 4 101.6 | 6.25 158.75 | 6 152.4 | 3 76.2 | 4.905 124.587 | 5.75 146 | 0.04 1 | 0.04 1 | 5 | 900 | 2650 | 8.56 |
| GEWZ114ES | GEWZ114ES-2RS | 4.5 114.3 | 7 177.8 | 6.75 171.45 | 3.375 85.725 | 5.525 140.335 | 6.475 164.5 | 0.04 1 | 0.04 1 | 5 | 1120 | 3400 | 12.24 |
| GEWZ127ES | GEWZ127ES-2RS | 5 127 | 7.75 196.85 | 7.5 190.5 | 3.75 95.25 | 6.13 155.705 | 7.19 183 | 0.04 1 | 0.04 1 | 5 | 1400 | 4150 | 16.63 |
| GEWZ152ES | GEWZ152ES-2RS | 6 152.4 | 8.75 222.25 | 8.25 209.55 | 4.125 104.775 | 7.02 178.308 | 8.156 207 | 0.04 1 | 0.04 1 | 5 | 1730 | 5200 | 20.7 |