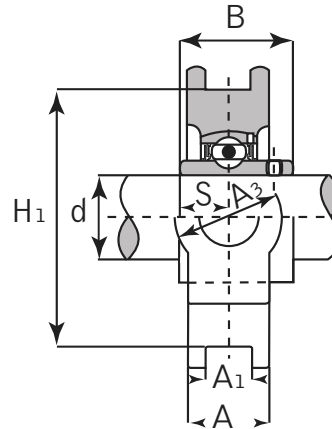
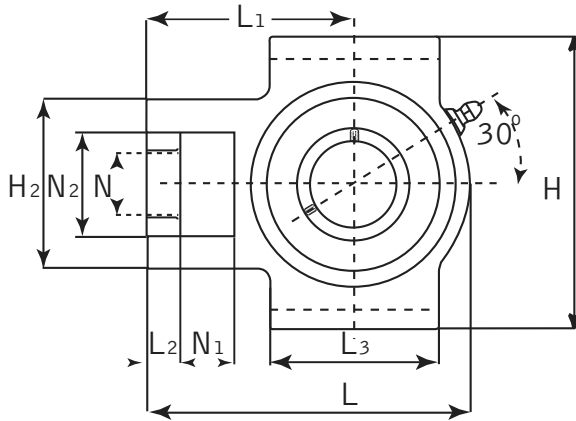




Take Up Unit

Normal Duty



UCT Set Screw Locking

Unit No.	Shaft Dia. (inch / mm)	Dimensions (inch / mm)															Bearing No.	Housing No.	Weight			
		d	N	N1	N2	L	L1	L2	L3	H	H1	H2	A	A1	A3	B			S	kg	lbs	
UCT 201	12 mm																		UC 201		0.80	1.76
201-8	1/2																		201-8		0.79	1.74
202	15 mm																		202	T 204	0.79	1.74
202-10	5/8	3/4	5/8	1-1/4	3-11/16	2-13/32	25/64	2-1/64	3-1/2	2-63/64	1-1/64	13/16	15/32	1-1/4	1.2205	0.500		202-10		0.79	1.74	
203	17 mm	19	16	32	94	61	10	51	89	76	51	21	12	32	31	12.7		203		0.78	1.72	
203-11	11/16																	203-11		0.77	1.69	
204	20 mm																		204		0.76	1.67
204-12	3/4																		204-12		0.76	1.67
UCT 205	25 mm																		UC 205		0.81	1.78
205-14	7/8	3/4	5/8	1-1/4	3-13/16	2-7/16	25/64	2-1/64	3-1/2	2-63/64	1-1/64	15/16	15/32	1-1/4	1.3425	0.5629		205-14	T 205	0.84	1.85	
205-15	15/16	19	16	32	97	62	10	51	89	76	51	14	12	32	34.1	14.3		205-15		0.82	1.80	
205-16	1																		205-16		0.81	1.78
UCT 206	30 mm																		UC 206		1.22	2.68
206-18	1-1/8	55/64	5/8	1-29/64	4-7/16	2-3/4	25/64	2-1/4	4-1/64	3-1/2	2-7/32	1-3/32	15/32	1-29/64	1.500	0.6259		206-18	T 206	1.24	2.73	
206-19	1-3/16	22	16	37	113	70	10	57	102	89	56	28	12	37	38.1	15.9		206-19		1.22	2.68	
206-20	1-1/4																		206-20		1.21	2.66
UCT 207	35 mm																		UC 207		1.44	3.17
207-20	1-1/4	55/64	5/8	1-29/64	5-3/32	3-5/64	33/64	2-33/64	4-1/64	3-1/2	w2-33/64	1-3/16	15/32	1-29/64	1.6890	0.6889		207-20	T 207	1.50	3.30	
207-21	1-5/16	22	16	37	129	78	13	64	102	89	64	30	12	37	42.9	17.5		207-21		1.46	3.21	
207-22	1-3/8																		207-22		1.44	3.17
207-23	1-7/16																		207-23		1.41	3.10
UCT 208	40 mm	1-9/64	3/4	1-15/16	5-21/32	3-1/2	5/8	3-17/64	4-1/2	4-1/64	3-17/64	1-5/16	5/8	1-15/16	1.9370	0.7480		UC 208		2.40	5.28	
208-24	1-1/2	29	19	49	144	89	16	83	114	102	83	33	16	49	49.2	19		208-24	T 208	2.44	5.37	
208-25	1-9/16																		208-25		2.41	5.30
UCT 209	45 mm	1-9/64	3/4	1-15/16	5-21/32	3-27/64	5/8	3-17/64	4-19/32	4-1/64	3-17/64	1-3/8	5/8	1-15/16	1.9370	0.7480		UC 209		2.36	5.19	
209-26	1-5/8	29	19	49	144	87	16	83	117	102	83	35	16	49	49.2	19		209-26	T 209	2.46	5.41	
209-27	1-11/16																		209-27		2.42	5.32
209-28	1-3/4																		209-28		2.38	5.24

