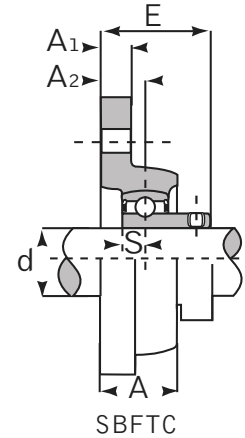
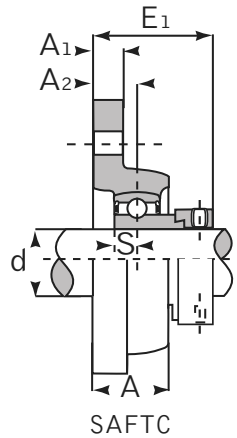
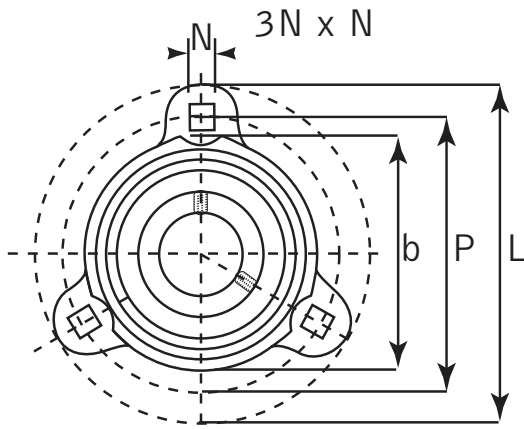




Malleable Ductile Flange Unit

Light Duty



SAFCT Eccentric Locking Collar SBFCT Set Screw Locking

Unit No. SAFCT SBFCT	Shaft Dia. (inch / mm)	Dimensions (inch / mm)							SAFCT		SBFCT		Bearing No. SA / SB	Housing No.	Weight	
		d	L	P	A	A1	A2	N	b	E1	S	E			S	kg
201 201-8 202 202-10 203 203-11	12 mm 1/2 15 mm 5/8 17 mm 1 1/16	3-3/16 80.9	2-1/2 63.5	45/64 18	13/32 10.3	3/8 9.7	9/32 7.1	2-3/32 53.2	1.2913 32.8	0.2559 6.5	1.0511 26.7	0.2362 6	201 201-8 202 202-10 203 203-11	FCT 203	0.26	0.57
204 204-12	20 mm 3/4	3-9/16 90.5	2-13/16 71.4	25/32 20	7/16 11.1	7/16 11.1	11/32 8.7	2-13/16 55.9	1.3582 34.5	0.2952 7.5	1.1456 29	0.2755 7	204 204-12	FCT 204	0.37	0.81
205 205-14 205-15 205-16	25 mm 7/8 15/16 1	3-3/4 95.3	3 76.2	25/32 20	1/2 12.7	7/16 11.1	11/32 8.7	2-13/16 71.4	1.3267 33.7	0.2952 7.5	1.1732 29.8	0.2952 7.5	205 205-14 205-15 205-16	FCT 205	0.48	1.06
206 206-18 206-19 206-20	30 mm 1-1/8 1-3/16 1-1/4	4-9/16 115.9	3-9/16 90.5	29/32 23	19/32 15.1	7/16 11.1	13/32 10.3	3 76.2	1.5236 38.7	0.3543 9	1.3385 34	0.3149 8	206 206-18 206-19 206-20	FCT 206	0.70	1.54
207 207-20 207-21 207-22 207-23	35 mm 1-1/4 1-5/16 1-3/8 1-7/16	4-13/16 122.2	3-15/16 100	61/64 24	19/32 15.1	1/2 12.7	13/32 10.3	3-15/32 88.1	1.6574 42.1	0.3740 9.5	1.4251 36.2	0.3346 8.5	207 207-20 207-21 207-22 207-23	FCT 207	0.91	2.00