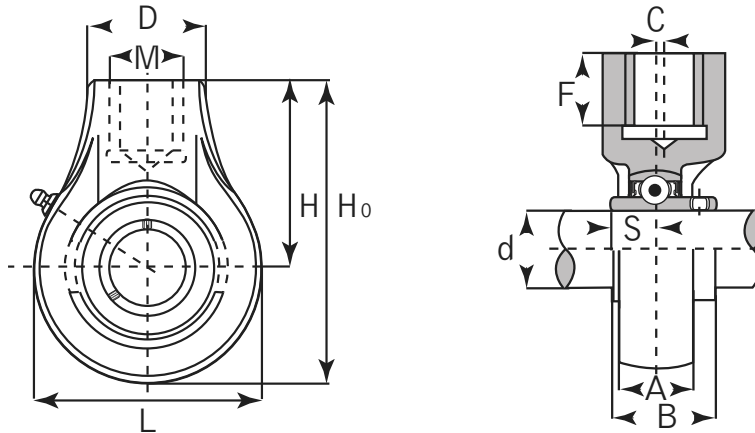




# Hanger Unit

## Normal Duty

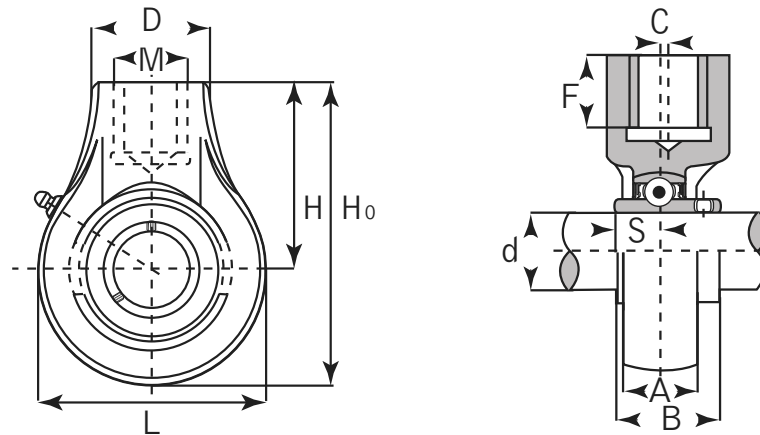


### UCHA Set Screw Locking

Unit No.	Shaft Dia. (inch / mm)	Dimensions (inch / mm)										Bearing No.	Housing No.	Weight		
		d	H	H0	L	C	A	M	D	F	B			S	kg	lbs
UCHA 201 201-8 202 202-10 203 203-11 204 204-12	12 mm												UC 201 201-8 202 202-10 203 203-11 204 204-12	HA 204	0.73	1.61
	1/2														0.72	1.58
	15 mm														0.72	1.58
	5/8	2-33/64	3-25/32	2-33/64	0	13/16	G-3/4	1-37/64	3/4	1.2204	0.500				0.72	1.58
	17 mm	<b>64</b>	<b>96</b>	<b>64</b>	0	<b>21</b>		<b>40</b>	<b>19</b>	<b>31</b>	<b>12.7</b>				0.72	1.58
	11/16														0.71	1.56
	20 mm														0.69	1.52
	3/4														0.69	1.52
UCHA 205 205-14 205-15 205-16	25 mm											UC 205 205-14 205-15 205-16	HA 205	0.83	1.83	
	7/8	2-33/64	4-1/16	3-1/16	0	15/16	G-3/4	1-37/64	3/4	1.3425	0.5629				0.86	1.89
	15/16	<b>64</b>	<b>103</b>	<b>78</b>	0	<b>24</b>		<b>40</b>	<b>19</b>	<b>34.1</b>	<b>14.3</b>				0.84	1.85
	1														0.83	1.83
UCHA 206 206-18 206-19 206-20	30 mm											UC 206 206-18 206-19 206-20	HA 206	0.83	1.83	
	1-1/8	2-33/64	4-1/16	3-1/16	0	1-7/64	G-3/4	1-37/64	3/4	1.500	0.6259				0.85	1.87
	1-3/16	<b>64</b>	<b>103</b>	<b>78</b>	0	<b>28</b>		<b>40</b>	<b>19</b>	<b>38.1</b>	<b>15.9</b>				0.83	1.83
	1-1/4														0.82	1.80
UCHA 207 207-20 207-21 207-22 207-23	35 mm											UC 207 207-20 207-21 207-22 207-23	HA 207	1.16	2.55	
	1-1/4	2-3/4	4-9/16	3-5/8	0	1-3/16	G-3/4	1-37/64	3/4	1.6889	0.6889				1.22	2.68
	1-5/16	<b>70</b>	<b>116</b>	<b>92</b>	0	<b>30</b>		<b>40</b>	<b>19</b>	<b>42.9</b>	<b>17.5</b>				1.19	2.62
	1-3/8														1.16	2.55
	1-7/16														1.13	2.49
UCHA 208 208-24 208-25	40 mm											UC 208 208-24 208-25	HA 208	1.32	2.90	
	1-1/2	2-7/8	4-3/4	3-25/32	5/64	1-5/16	G-3/4	1-37/64	3/4	1.9370	0.7480				1.36	2.99
	1-9/16	<b>73</b>	<b>121</b>	<b>96</b>	<b>2</b>	<b>33</b>		<b>40</b>	<b>19</b>	<b>49.2</b>	<b>19</b>				1.33	2.93
UCHA 209 209-26 209-27 209-28	45 mm											UC 209 209-26 209-27 209-28	HA 209	1.92	4.22	
	1-5/8	3-15/64	5-11/32	4-1/4	13/64	1-3/8	G-1	1-57/64	53/64	1.9370	0.7480				2.02	4.44
	1-11/16	<b>82</b>	<b>136</b>	<b>108</b>	<b>5</b>	<b>35</b>		<b>48</b>	<b>21</b>	<b>49.2</b>	<b>19</b>				1.98	4.36
	1-3/4														1.94	4.27

# Hanger Unit

## Normal Duty



### UCHA Set Screw Locking

Unit No.	Shaft Dia. (inch / mm)	Dimensions (inch / mm)										Bearing No.	Housing No.	Weight	
		d	H	H0	L	C	A	M	D	F	B			S	kg
UCHA 210 210-30 210-31 210-32	50 mm 1-7/8 1-15/16 2	3-17/64 <b>83</b>	5-19/32 <b>142</b>	4-21/32 <b>118</b>	13/64 <b>5</b>	1-29/64 <b>37</b>	G-1	1-57/64 <b>48</b>	53/64 <b>21</b>	2.0314 <b>51.6</b>	0.7480 <b>19</b>	UC 210 210-30 210-31 210-32	HA 210	1.90 1.97 1.92 1.88	4.18 4.33 4.22 4.14
UCHA 211 211-32 211-34 211-35	55 mm 2 2-1/8 2-3/16	3-27/64 <b>87</b>	5-29/32 <b>150</b>	4-31/32 <b>126</b>	9/32 <b>7</b>	1-1/2 <b>38</b>	G-1-1/4	2-23/64 <b>60</b>	63/64 <b>25</b>	2.1889 <b>55.6</b>	0.8740 <b>22.2</b>	UC 211 211-32 211-34 211-35	HA 211	2.16 2.76 2.65 2.59	4.75 6.07 5.83 5.70
UCHA 212 212-36 212-38 212-39	60 mm 2-1/4 2-3/8 2-7/16	4-1/64 <b>102</b>	6-13/16 <b>173</b>	5-19/32 <b>142</b>	23/64 <b>9</b>	1-21/32 <b>42</b>	G-1-1/4	2-23/64 <b>60</b>	1-7/64 <b>28</b>	2.5629 <b>65.1</b>	1.000 <b>25.4</b>	UC 212 212-36 212-38 212-39	HA 212	3.54 3.67 3.52 3.45	7.79 8.07 7.74 7.59
UCHA 213 213-40	65 mm 2-1/2	4-39/64 <b>117</b>	7-7/8 <b>200</b>	6-17/32 <b>166</b>	3/8 <b>9.5</b>	1-47/64 <b>44</b>	G-1-1/2	2-3/4 <b>70</b>	1-17/64 <b>32</b>	2.5629 <b>65.1</b>	1.000 <b>25.4</b>	UC 213 213-40	HA 213	5.80 5.89	12.76 12.96
UCHA 214 214-43 214-44	70 mm 2-11/16 2-3/4	4-39/64 <b>117</b>	7-7/8 <b>200</b>	6-17/32 <b>166</b>	3/8 <b>9.5</b>	1-47/64 <b>44</b>	G-1-1/2	2-3/4 <b>70</b>	1-17/64 <b>32</b>	2.9370 <b>74.6</b>	1.1889 <b>30.2</b>	UC 214 214-43 214-44	HA 214	5.64	12.41
UCHA 215 215-47 215-48	75 mm 2-15/16 3	4-39/64 <b>117</b>	7-7/8 <b>200</b>	6-17/32 <b>166</b>	3/8 <b>9.5</b>	1-47/64 <b>44</b>	G-1-1/2	2-3/4 <b>70</b>	1-17/64 <b>32</b>	3.0629 <b>77.8</b>	1.3110 <b>33.3</b>	UC 215 215-47 215-48	HA 215	5.58	12.28