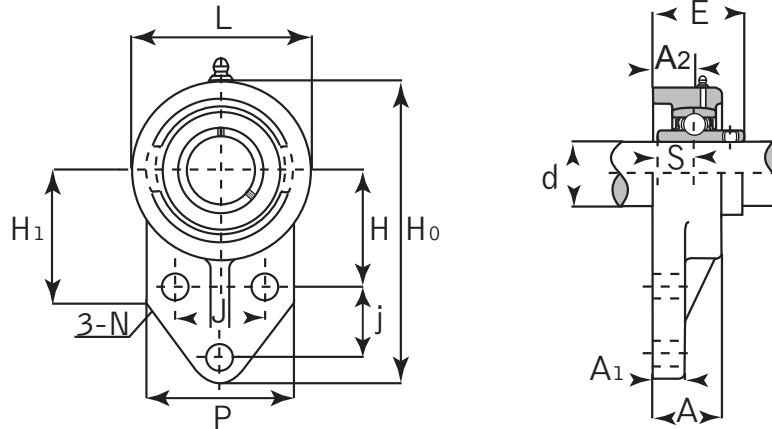


# Flange Bracket Unit

Normal Duty



## UCFK Set Screw Locking

Unit No.	Shaft Dia. (inch / mm)	Dimensions (inch / mm)													Bolt Size	Bearing No.	Housing No.	Weight	
		d	H	H0	H1	L	P	J	j	A	A1	A2	N	E				S	kg
UCFK 201 201-8 202 202-10 203 203-11 204 204-12	12 mm 1/2 15 mm 5/8 17 mm 11/16 20 mm 3/4	1-21/32 <b>42</b>	4-11/32 <b>110</b>	2-1/16 <b>52</b>	2-7/16 <b>62</b>	2-1/16 <b>52</b>	1-1/4 <b>32</b>	1-1/16 <b>27</b>	1 <b>25.4</b>	1/2 <b>13</b>	19/32 <b>15</b>	13/32 <b>10</b>	1.2204 <b>31</b>	0.500 <b>12.7</b>	5/16 M 8	UC 201 201-8 202 202-10 203 203-11 204 204-12	FK 204	0.60	1.32
UCFK 205 205-14 205-15 205-16	25 mm 7/8 15/16 1	1-25/32 <b>45</b>	4-9/16 <b>116</b>	2-1/16 <b>52</b>	2-11/16 <b>68</b>	2-7/32 <b>56</b>	1-11/32 <b>34</b>	1-1/16 <b>27</b>	1-1/16 <b>27</b>	1/2 <b>13</b>	5/8 <b>16</b>	13/32 <b>10</b>	1.3385 <b>34</b>	0.5629 <b>14.3</b>	5/16 M 8	UC 205 205-14 205-15 205-16	FK 205	0.66	1.45
UCFK 206 206-18 206-19 206-20	30 mm 1-1/8 1-3/16 1-1/4	1-31/32 <b>50</b>	5-1/8 <b>130</b>	2-5/32 <b>55</b>	3-1/16 <b>78</b>	2-9/16 <b>65</b>	1-9/16 <b>40</b>	1-3/16 <b>29</b>	1-1/4 <b>31</b>	1/2 <b>13</b>	23/32 <b>18</b>	13/32 <b>10</b>	1.500 <b>38.1</b>	0.6259 <b>15.9</b>	5/16 M 8	UC 206 206-18 206-19 206-20	FK 206	0.93	2.05
UCFK 207 207-20 207-21 207-22 207-23	35 mm 1-1/4 1-5/16 1-3/8 1-7/16	2-11/64 <b>55</b>	5-11/16 <b>144</b>	2-7/16 <b>62</b>	3-17/32 <b>90</b>	2-3/4 <b>70</b>	1-13/16 <b>46</b>	1-1/4 <b>32</b>	1-11/32 <b>34</b>	19/32 <b>15</b>	3/4 <b>19</b>	13/32 <b>10</b>	1.6889 <b>42.9</b>	0.6889 <b>17.5</b>	5/16 M 8	UC 207 207-20 207-21 207-22 207-23	FK 207	1.3	2.86
UCFK 208 208-24 208-25	40 mm 1-1/2 1-9/16	2-3/8 <b>60</b>	6-7/16 <b>164</b>	2-27/32 <b>72</b>	3-15/16 <b>100</b>	3-1/16 <b>78</b>	1-31/32 <b>50</b>	1-5/8 <b>41</b>	1-13/32 <b>36</b>	5/8 <b>16</b>	13/16 <b>21</b>	15/32 <b>12</b>	1.9370 <b>49.2</b>	0.7480 <b>19</b>	3/8 M 10	UC 208 208-24 208-25	FK 208	1.7	3.74
UCFK 209 209-26 209-27 209-28	45 mm 1-5/8 1-11/16 1-3/4	2-9/16 <b>65</b>	6-27/32 <b>174</b>	3 <b>76</b>	4-3/16 <b>106</b>	3-5/32 <b>80</b>	2-1/8 <b>54</b>	1-11/16 <b>43</b>	1-1/2 <b>38</b>	23/32 <b>18</b>	7/8 <b>22</b>	15/32 <b>12</b>	1.9370 <b>49.2</b>	0.7480 <b>19</b>	3/8 M 10	UC 209 209-26 209-27 209-28	FK 209	1.9	4.18
UCFK 210 210-30 210-31 210-32	50 mm 1-7/8 1-15/16 2	2-11/16 <b>68</b>	7-1/4 <b>184</b>	3-7/32 <b>82</b>	4-13/32 <b>112</b>	3-3/8 <b>86</b>	2-9/32 <b>58</b>	1-13/16 <b>46</b>	1-9/16 <b>40</b>	23/32 <b>18</b>	7/8 <b>22</b>	15/32 <b>12</b>	2.0314 <b>51.6</b>	0.7480 <b>19</b>	3/8 M 10	UC 210 210-30 210-31 210-32	FK 210	2.2	4.84