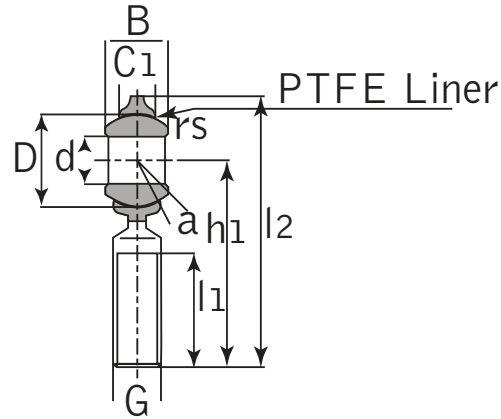
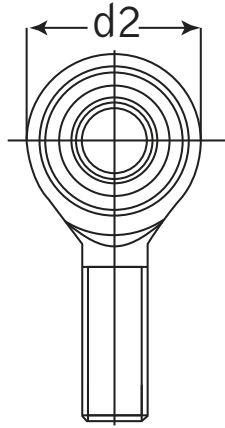




Male Rod Ends

Stainless Steel - SMR_T & SML_T Series



Unit No.		Dimensions (inch / mm)											Load Ratings lbf / N		Mass	
Right-hand	Left-hand	d	B	D	C1	d2	G	h1	l1	l2	rs	a	Dynamic Cr	Static C0r	kg	lbs
SMR 3T	SML 3T	0.190 4.83	0.312 7.92	0.437 11.10	0.234 5.94	0.625 15.88	10-32	1.250 31.75	0.750 19.05	1.563 39.70	0.012 0.30	10.0	611 2720	641 2850	0.014	0.031
SMR 4T	SML 4T	0.250 6.35	0.375 9.53	0.500 12.70	0.250 6.35	0.750 19.05	1/4-28	1.562 39.67	1.000 25.40	1.937 49.20	0.012 0.30	13.5	810 3600	1113 4950	0.018	0.040
SMR 5T	SML 5T	0.313 7.95	0.437 11.10	0.625 15.88	0.312 7.92	0.875 22.23	5/16-24	1.875 47.63	1.250 31.75	2.312 58.72	0.012 0.30	11.0	1241 5520	1416 6300	0.032	0.070
SMR 6T	SML 6T	0.375 9.53	0.500 12.70	0.719 18.26	0.359 9.12	1.000 25.40	3/8-24	1.938 49.23	1.250 31.75	2.438 61.93	0.024 0.61	11.0	1690 7520	16686 7500	0.050	0.110
SMR 7T	SML 7T	0.438 11.13	0.562 14.27	0.812 20.62	0.406 10.31	1.125 28.58	7/16-20	2.125 53.98	1.375 34.93	2.688 68.28	0.024 0.61	10.5	1978 8800	2192 9750	0.068	0.150
SMR 8T	SML 8T	0.500 12.70	0.625 15.88	0.937 23.80	0.453 11.51	1.312 33.32	1/2-20	2.438 61.93	1.500 38.10	3.094 78.59	0.024 0.61	10.0	2698 12000	3203 14250	0.110	0.242
SMR 10T	SML 10T	0.625 15.88	0.75 19.05	1.125 28.58	0.484 12.29	1.500 38.10	5/8-18	2.625 66.68	1.625 41.28	3.375 85.73	0.024 0.61	13.0	3597 16000	3541 15750	0.160	0.352
SMR 12T	SML 12T	0.750 19.05	0.875 22.23	1.312 33.32	0.593 15.06	1.750 44.45	3/4-16	2.875 73.03	1.75 44.45	3.75 95.25	0.024 0.61	12.0	5215 23200	4889 21750	0.260	0.572

Other sizes could be available upon request. Minimum quantity may apply.