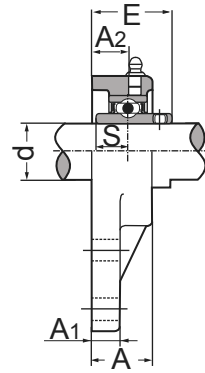
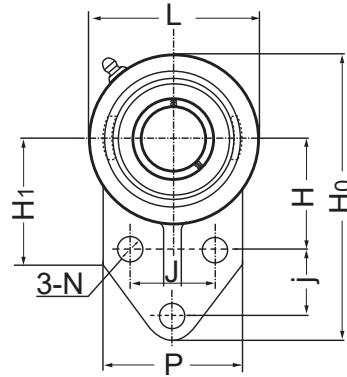


# Flange Bracket Units

## Stainless Steel - SSUCFB Series



Also available with eccentric locking collar bearing

Unit No.	Shaft Dia. (inch / mm)	Dimensions (inch / mm)													Bolt Size	Bearing No.	Housing No.	Mass	
		d	H0	H1	L	P	H	j	J	A	A1	A2	N	E				S	kg
SSUCFB 201 201-8 202 202-10 203 204 204-12	12 mm 1/2 15 mm 5/8 17 mm 20 mm 3/4	4-1/4 <b>107.9</b>	2-1/16 <b>52</b>	2-1/2 <b>63.5</b>	2-1/2 <b>63.5</b>	1-21/32 <b>42</b>	7/8 <b>22.2</b>	1-1/2 <b>38.1</b>	1 <b>25.4</b>	5/16 <b>8.0</b>	5/8 <b>15.9</b>	13/32 <b>10.0</b>	1.3425 <b>34.1</b>	0.500 <b>12.7</b>	5/16 M8	SUC 201 201-8 202 202-10 203 204-12 204	SFB 204	0.70	1.54
SSUCFB 205-14 205-15 205 205-16	7/8 15/16 25 mm 1	4-3/4 <b>120.7</b>	2-1/16 <b>52</b>	2-3/4 <b>69.9</b>	2-1/2 <b>63.5</b>	1-49/64 <b>45.0</b>	1-1/8 <b>28.6</b>	1-5/8 <b>41.3</b>	1-1/8 <b>28.6</b>	3/8 <b>9.6</b>	21/32 <b>16.7</b>	13/32 <b>10.0</b>	1.4370 <b>36.5</b>	0.5629 <b>14.3</b>	5/16 M8	SUC 205-14 205-15 205 205-16	SFB 205	0.80	1.76
SSUCFB 206-18 206 206-19 206-20	1-1/8 30 mm 1-3/16 1-1/4	5-3/8 <b>136.5</b>	2-5/32 <b>55</b>	3-1/4 <b>82.6</b>	2-3/4 <b>69.9</b>	1-31/32 <b>52.4</b>	1-1/4 <b>31.8</b>	1-7/8 <b>47.6</b>	1-1/4 <b>31.8</b>	3/8 <b>9.6</b>	47/64 <b>18.7</b>	13/32 <b>10.0</b>	1.6102 <b>40.9</b>	0.6259 <b>15.9</b>	5/16 M8	SUC 206-18 206 206-19 206-20	SFB 206	1.00	2.20
SSUCFB 207-20 207-21 207-22 207 207-23	1-1/4 1-5/16 1-3/8 35 mm 1-7/16	6-1/8 <b>155.6</b>	2-7/16 <b>62</b>	3-3/4 <b>95.3</b>	3-1/4 <b>82.6</b>	2-3/8 <b>60.3</b>	1-1/4 <b>31.8</b>	2 <b>50.8</b>	1-7/16 <b>36.5</b>	1/2 <b>12.7</b>	13/16 <b>21.0</b>	33/64 <b>13.1</b>	1.8267 <b>46.4</b>	0.6889 <b>17.5</b>	5/16 M8	SUC 207-20 207-21 207-22 207 207-23	SFB 207	1.60	3.54
SSUCFB 208 208-24 208-25	40 mm 1-1/2 1-9/16	6-15/32 <b>164.3</b>	2-27/32 <b>72</b>	3-15/16 <b>100</b>	3-1/16 <b>77.8</b>	2-23/64 <b>60.0</b>	1-5/8 <b>41.3</b>	1-31/32 <b>50.0</b>	1-31/32 <b>35.7</b>	5/8 <b>15.9</b>	13/16 <b>21.0</b>	15/32 <b>12</b>	2.0157 <b>51.2</b>	0.7480 <b>19.0</b>	3/8 M10	SUC 208 208-24 208-25	SFB 208	1.78	3.92
SSUCFB 209 209-26 209-27 209-28	45 mm 1-5/8 1-11/16 1-3/4	6-27/32 <b>173.9</b>	3 <b>76</b>	4-7/32 <b>107.4</b>	3-5/32 <b>80.2</b>	2-9/16 <b>65</b>	1-11/16 <b>42.9</b>	2-1/8 <b>53.9</b>	1-1/2 <b>38.1</b>	23/32 <b>18.3</b>	55/64 <b>21.8</b>	7/16 <b>11.9</b>	2.0157 <b>51.2</b>	0.7480 <b>19</b>	3/8 M10	SUC 209 209-26 209-27 209-28	SFB 209	2.20	4.84
SSUCFB 210 210-30 210-31 210-32	50 mm 1-7/8 1-15/16 2	7-1/2 <b>190.5</b>	3-7/32 <b>82</b>	4-5/8 <b>117.5</b>	4 <b>101.6</b>	2-15/16 <b>74.6</b>	1-5/8 <b>41.3</b>	2-3/4 <b>69.9</b>	1-1/2 <b>38.1</b>	23/32 <b>18.3</b>	55/64 <b>21.8</b>	33/64 <b>13.1</b>	2.1102 <b>53.6</b>	0.7480 <b>19</b>	3/8 M10	SUC 210 210-30 210-31 210-32	SFB 210	2.50	5.50

Other sizes could be available upon request. Minimum quantity may apply.  
Please refer to page 52 for setscrew maximum torque informations.