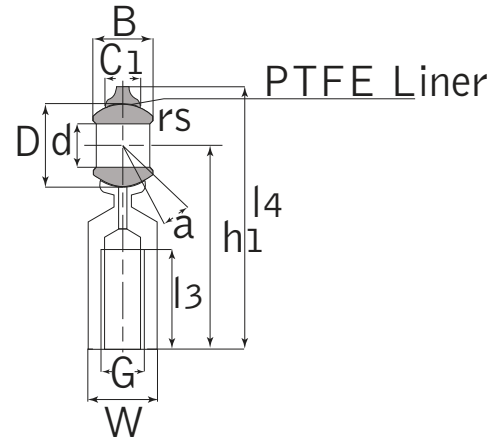
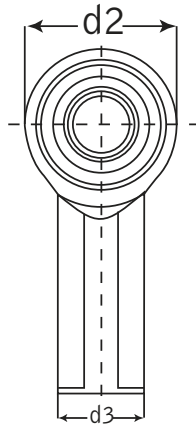


Female Rod Ends

Stainless Steel - SFR_T & SFL_T Series



Unit No.		Dimensions (inch / mm)													Load Ratings lbf / N		Mass	
Right-hand	Left-hand	d	B	D	C1	d2	G	h1	l3	l4	W	d3	rs	a	Dynamic Cr	Static C0r	kg	lbs
SFR 3T	SFL 3T	0.190 4.83	0.312 7.92	0.437 11.10	0.25 5.94	0.625 15.88	10-32	1.062 26.97	0.562 12.70	1.375 34.93	0.312 7.92	0.406 10.31	0.012 0.30	10	611 2720	776 3450	0.015	0.033
SFR 4T	SFL 4T	0.250 6.35	0.375 9.53	0.500 12.70	0.281 6.35	0.750 19.05	1/4-28	1.312 33.32	0.750 19.05	1.687 42.85	0.375 9.53	0.469 11.91	0.012 0.30	13	810 3600	1298 5775	0.025	0.055
SFR 5T	SFL 5T	0.313 7.95	0.437 11.10	0.625 15.88	0.344 7.92	0.875 22.23	5/16-24	1.375 34.93	0.750 19.05	1.812 46.02	0.437 11.10	0.500 12.70	0.012 0.30	10	1241 5520	1416 6300	0.036	0.079
SFR 6T	SFL 6T	0.375 9.53	0.500 12.70	0.719 18.26	0.406 10.31	1.000 25.40	3/8-24	1.625 41.28	0.937 23.80	2.125 53.98	0.562 14.27	0.687 17.45	0.024 0.61	9	1618 7200	1585 7050	0.061	0.134
SFR 7T	SFL 7T	0.438 11.13	0.562 14.27	0.812 20.62	0.437 11.10	1.125 28.58	7/16-20	1.812 46.02	1.062 26.97	2.375 60.33	0.625 15.88	0.750 19.05	0.024 0.61	11	1978 8800	2192 9750	0.081	0.178
SFR 8T	SFL 8T	0.500 12.70	0.625 15.88	0.937 23.80	0.500 12.70	1.312 33.32	1/2-20	2.125 53.98	1.187 30.15	2.781 70.64	0.750 19.05	0.875 22.23	0.024 0.61	9	2698 12000	3203 14250	0.133	0.293
SFR 10T	SFL 10T	0.625 15.88	0.750 19.05	1.125 28.58	0.562 12.29	1.500 38.10	5/8-18	2.500 63.50	1.500 31.75	3.250 82.55	0.875 22.23	1.000 25.40	0.024 0.61	11	35975 16000	3541 15750	0.190	0.418
SFR 12T	SFL 12T	0.750 19.05	0.875 22.23	1.312 33.32	0.687 17.45	1.750 44.45	3/4-16	2.875 73.03	1.750 44.45	3.750 95.25	1.000 25.40	1.125 28.58	0.024 0.61	10	5215 23200	4889 21750	0.285	0.627

Other sizes could be available upon request. Minimum quantity may apply.