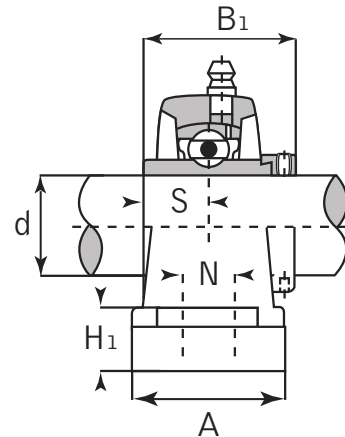
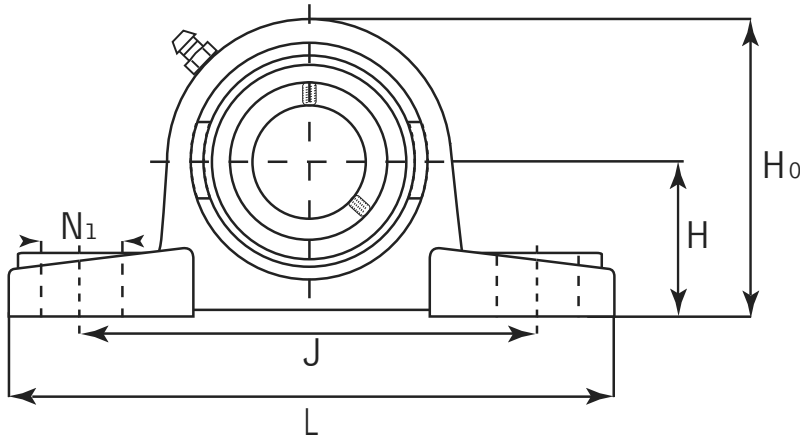




# Pillow Block

Normal Duty

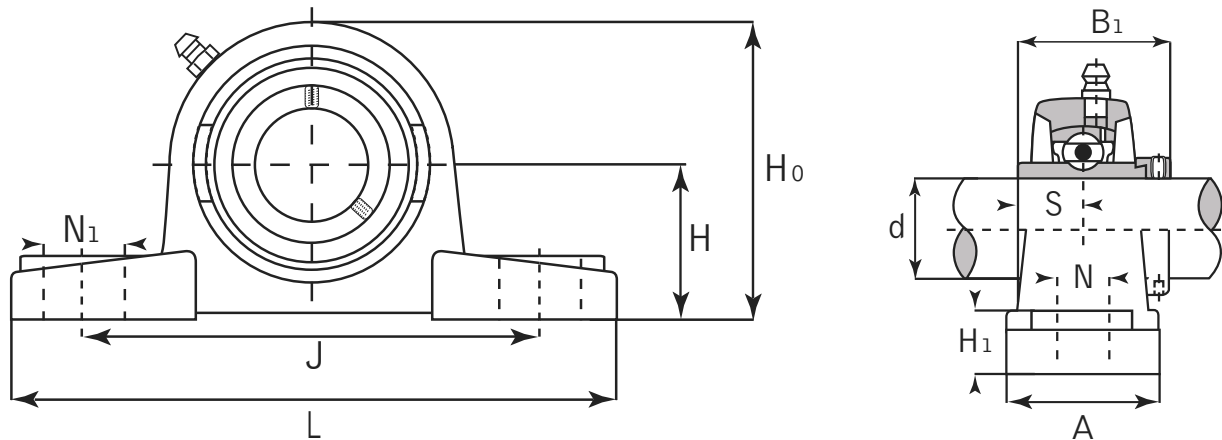


## HCP Eccentric Locking Collar

Unit No.	Shaft Dia. (inch / mm)	Dimensions (inch / mm)										Bolt Size	Bearing No.	Housing No.	Weight			
		d	H	H0	H1	L	J	A	N	N1	S				B1	kg	lbs	
HCP 201-8	1/2																0.46	1.01
202	15 mm																0.46	1.01
202-9	9/16																0.46	1.01
202-10	5/8	1-5/16	2-9/16	9/16	5	3-3/4	1-1/2	1/2	5/8	0.6732	1.720						0.47	1.03
203	17 mm	<b>33.3</b>	<b>65</b>	<b>14</b>	<b>127</b>	<b>95</b>	<b>38</b>	<b>13</b>	<b>16</b>	<b>17.1</b>	<b>43.7</b>						0.48	1.06
203-11	11/16																0.49	1.08
204	20 mm																0.73	1.61
204-12	3/4																0.73	1.61
HCP 205	25 mm																0.83	1.83
205-14	7/8	1-7/16	2-25/32	19/32	5-1/2	4-1/8	1-1/2	33/64	3/4	0.6889	1.748						0.92	2.02
205-15	15/16	<b>36.5</b>	<b>71</b>	<b>15</b>	<b>140</b>	<b>105</b>	<b>38</b>	<b>13</b>	<b>19</b>	<b>17.5</b>	<b>44.4</b>						0.90	1.98
205-16	1																0.88	1.94
HCP 206	30 mm																1.37	3.01
206-17	1-1/16	1-11/16	3-5/16	5/8	6-5/16	4-3/4	1-3/4	9/16	3/4	0.7204	1.906						1.37	3.01
206-18	1-1/8	<b>42.9</b>	<b>83</b>	<b>16</b>	<b>160</b>	<b>121</b>	<b>44</b>	<b>14</b>	<b>19</b>	<b>18.3</b>	<b>48.4</b>						1.39	3.06
206-19	1-3/16																1.37	3.01
206-20	1-1/4																1.34	2.95
HCP 207	35 mm																1.70	3.74
207-20	1-1/4	1-7/8	3-21/32	23/32	6-9/16	5	1-7/8	21/32	25/32	0.7401	2.012						1.77	3.89
207-21	1-5/16	<b>47.6</b>	<b>93</b>	<b>18</b>	<b>167</b>	<b>127</b>	<b>48</b>	<b>17</b>	<b>20</b>	<b>18.8</b>	<b>51.1</b>						1.73	3.81
207-22	1-3/8																1.70	3.74
207-23	1-7/16																1.67	3.67
HCP 208	40 mm																2.04	4.49
208-24	1-1/2	1-15/16	3-15/16	23/32	7-1/4	5-13/32	2-1/8	21/32	25/32	0.8425	2.217						2.09	4.60
208-25	1-9/16	<b>49.2</b>	<b>100</b>	<b>18</b>	<b>184</b>	<b>137</b>	<b>54</b>	<b>17</b>	<b>20</b>	<b>21.4</b>	<b>56.3</b>						2.05	4.51

# Pillow Block

## Normal Duty



## HCP Eccentric Locking Collar

Unit No.	Shaft Dia. (inch / mm)	Dimensions (inch / mm)										Bolt Size	Bearing No.	Housing No.	Weight		
		d	H	H0	H1	L	J	A	N	N1	S				B1	kg	lbs
HCP 209	45 mm												1/2 M14	HC 209 209-26 209-27 209-28	P 209	2.31	5.08
209-26	1-5/8	2-1/8	4-3/16	25/32	7-15/32	5 3/4	2-1/8	21/32	25/32	0.8425	2.217	2.42				5.32	
209-27	1-11/16	<b>54</b>	<b>106</b>	<b>20</b>	<b>190</b>	<b>146</b>	<b>54</b>	<b>17</b>	<b>20</b>	<b>21.4</b>	<b>56.3</b>	2.37				5.21	
209-28	1-3/4											2.33				5.13	
HCP 210	50 mm											5/8 M16	HC 210 210-30 210-31	P 210	2.85	6.27	
210-30	1-7/8	2-1/4	4-29/64	53/64	8-1/8	6-1/4	2-3/8	25/32	29/32	0.9685	2.469				2.94	6.47	
210-31	1-15/16	<b>57.2</b>	<b>113</b>	<b>21</b>	<b>206</b>	<b>159</b>	<b>60</b>	<b>20</b>	<b>23</b>	<b>24.6</b>	<b>62.7</b>				2.88	6.34	
HCP 211	55 mm											5/8 M16	HC 211 211-32 211-34 211-35	P 211	3.52	7.74	
211-32	2	2-1/2	4-59/64	29/32	8-5/8	6-47/64	2-3/8	25/32	29/32	1.0944	2.811				3.72	8.18	
211-34	2-1/8	<b>63.5</b>	<b>125</b>	<b>23</b>	<b>219</b>	<b>171</b>	<b>60</b>	<b>20</b>	<b>23</b>	<b>27.8</b>	<b>71.4</b>				3.57	7.85	
211-35	2-3/16														3.49	7.68	
HCP 212	60 mm											5/8 M16	HC 212 212-36 212-38 212-39	P 212	5.24	11.53	
212-36	2-1/4	2-3/4	5-7/16	63/64	9-1/2	7-1/4	2-3/4	25/32	29/32	1.2204	3.063				5.40	11.88	
212-38	2-3/8	<b>69.8</b>	<b>138</b>	<b>25</b>	<b>241</b>	<b>184</b>	<b>70</b>	<b>20</b>	<b>23</b>	<b>31</b>	<b>77.8</b>				5.26	11.57	
212-39	2-7/16														5.13	11.29	
HCP 213	65 mm											3/4 M20	HC 213 213-40	P 213	5.71	12.56	
213-40	2-1/2	<b>76.2</b>	<b>150</b>	<b>27</b>	<b>265</b>	<b>203</b>	<b>70</b>	<b>25</b>	<b>28</b>	<b>34.1</b>	<b>85.7</b>				5.81	12.78	
HCP 214	70 mm											3/4 M20	HC 214 214-43 214-44	P 214	6.70	14.74	
214-43	2-11/16	3-1/8	6-9/64	1-1/16	10-15/32	8-17/64	2-27/32	63/64	1-3/32	1.3425	3.374				6.94	15.27	
214-44	2-3/4	<b>79.4</b>	<b>156</b>	<b>27</b>	<b>266</b>	<b>210</b>	<b>72</b>	<b>25</b>	<b>28</b>	<b>34.1</b>	<b>85.7</b>				6.83	15.03	
HCP 215	75 mm											3/4 M20	HC 215 215-47 215-48	P 215	7.79	17.14	
215-47	2-15/16	3-1/4	6-3/8	1-3/32	10-53/64	8-35/64	2-29/32	63/64	1-3/32	1.4685	3.626				7.96	17.51	
215-48	3	<b>82.6</b>	<b>162</b>	<b>28</b>	<b>275</b>	<b>217</b>	<b>74</b>	<b>25</b>	<b>28</b>	<b>37.3</b>	<b>92.1</b>				7.83	17.23	
HCP 216	80 mm											3/4 M20	HC 216 215-50	P 216	8.30	18.26	
216-50	3-1/8	<b>88.9</b>	<b>174</b>	<b>30</b>	<b>292</b>	<b>232</b>	<b>78</b>	<b>25</b>	<b>30</b>	<b>37.3</b>	<b>95.2</b>						
HCP 217	85 mm											3/4 M20	HC 217 217-52	P 217	10.17		
217-52	3-1/4	3-3/4	7-5/16	1-1/4	12-13/64	9-23/32	3-17/64	63/64	1-3/16	0.9212	2.882						
HCP 218	90 mm											11/16 M22	HC 218 218-56	P 218	12.28		
218-56	3-1/2	<b>101.6</b>	<b>198</b>	<b>33</b>	<b>326</b>	<b>262</b>	<b>88</b>	<b>27</b>	<b>30</b>	<b>24.5</b>	<b>72.5</b>						