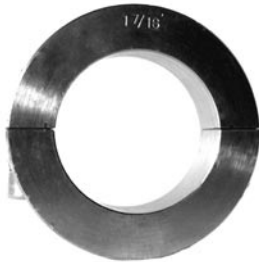
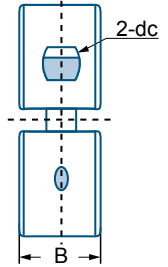
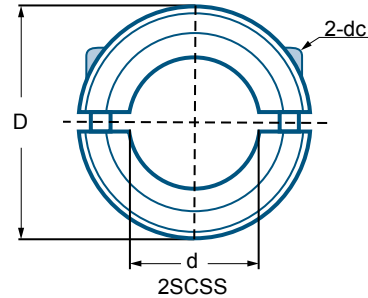


2SCSS Series



2SCSS 1-7/16



Unit No.	Dimensions (in)				Mass	
	Dimensions (mm)				kg	lbs
	d	D	B	dc		
2SCSS 1/8	0,125	0,500	0,250	4-40	0,014	0,030
3/16	0,188	0,625	0,313	4-40	0,013	0,028
1/4	0,250	0,688	0,313	4-40	0,012	0,026
5/16	0,313	0,688	0,313	4-40	0,011	0,025
3/8	0,375	0,875	0,375	6-32	0,023	0,050
2SCSS 7/16	0,438	0,938	0,375	6-32	0,023	0,051
1/2	0,500	1,125	0,406	8-32	0,041	0,090
9/16	0,563	1,250	0,438	10-32	0,040	0,088
5/8	0,625	1,313	0,438	10-32	0,063	0,138
11/16	0,688	1,375	0,438	10-32	0,060	0,131
2SCSS 3/4	0,750	1,500	0,500	1/4-28	0,102	0,225
7/8	0,875	1,625	0,500	1/4-28	0,116	0,256
15/16	0,938	1,750	0,500	1/4-28	0,111	0,244
1	1,000	1,750	0,500	1/4-28	0,128	0,281
1-1/8	1,125	1,875	0,500	1/4-28	0,142	0,313
2SCSS 1-3/16	1,188	2,063	0,500	1/4-28	0,134	0,294
1-1/4	1,250	2,063	0,500	1/4-28	0,150	0,331
1-5/16	1,313	2,125	0,563	1/4-28	0,142	0,313
1-3/8	1,375	2,250	0,563	1/4-28	0,165	0,363
1-7/16	1,438	2,250	0,563	1/4-28	0,156	0,344
2SCSS 1-1/2	1,500	2,375	0,563	1/4-28	0,176	0,388
1-3/4	1,750	2,750	0,688	5/16-24	0,327	0,719
1-15/16	1,938	3,000	0,688	5/16-24	0,381	0,838
2	2,000	3,000	0,688	5/16-24	0,361	0,794
2-1/4	2,250	3,250	0,750	5/16-24	0,398	0,875
2SCSS 2-3/8	2,375	3,500	0,750	5/16-24	0,381	0,838
2-7/16	2,438	3,500	0,750	5/16-24	0,366	0,806
2-1/2	2,500	3,750	0,875	3/8-24	0,648	1,425
2-15/16	2,938	4,250	0,875	3/8-24	0,795	1,750
3	3,000	4,250	0,875	3/8-24	0,756	1,663

Other sizes could be available upon request. Minimum quantity may apply.